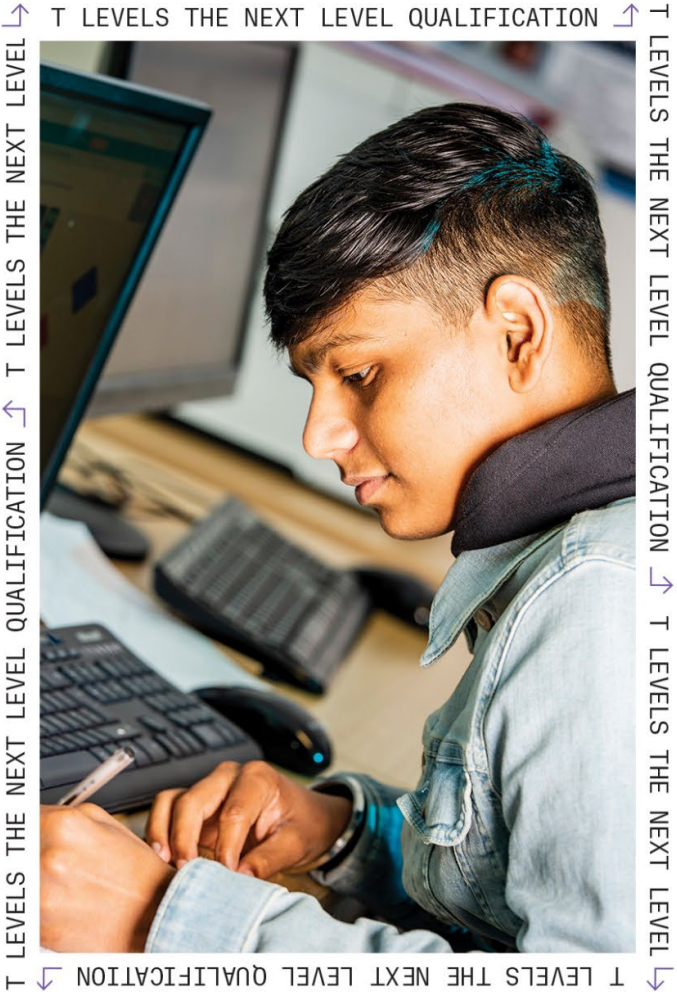


DIGITAL SUPPORT SERVICES



Better Futures
Multi-Academy Trust

Coventry University 



 HM Government

T-LEVELS
THE NEXT LEVEL QUALIFICATION

T LEVEL TECHNICAL QUALIFICATION IN DIGITAL SUPPORT SERVICES



COURSE OVERVIEW

T Levels are ideal if you have finished your GCSEs and want the knowledge. The core element of a T Level in Digital Support Services will boost your knowledge in a range of topics such as programming, coding, the use of data and the different platforms of delivery in the digital industry. It's a cutting-edge subject, so you'll also learn about the potential security risks that organisations can face and how to analyse problems and identify solutions through computer programs.

Occupational Specialism: IT Technician

You'll then move on to study the role of IT technicians in more detail, so you can build up the skills you need for your future job. You'll learn about network cabling, cyber security and configuring servers. You'll also develop the skills needed for IT Support and the different ways to support and organisations IT Infrastructure. You will also learn about the important aspects of cyber security and protecting your IT systems. Then you'll be able to put everything you learn into practice, with a substantial industry placement of around 45 days. Giving you an amazing opportunity to work with an employer while you study, such as an IT company or department, and gain invaluable experience as well as key skills that employers are looking for.

CAREER PROGRESSION

A range of progression opportunities include:

- employment as a data analyst, MIS assistant, business support.
- higher education in computer science or cyber security
- apprenticeship at level 4 in computer science, coding or programming.

KEY FACTS

Course Duration:

- T Levels are a 2-year qualification that you can do as an alternative to A Levels, other post-16 courses or an apprenticeship.
- They bring classroom learning and an extended industry placement together on a course designed with businesses and employers.
- The course is equivalent to 3 A Levels.

Entry Requirements:

5 GCSEs grade 4-9 including English and Maths

Assessment:

Students who complete their T Level will receive an overall grade of pass, merit, distinction or distinction*. They will get a nationally recognised certificate which will show their overall grade and a breakdown of what they have achieved.

Further Information

Core component:

- 2 written examinations
- Employer set project

Occupational specialism component:

- Externally set assignment
- Practical assessments of work through a project

For more information go to www.gateway.ac.uk

T-LEVELS
THE NEXT LEVEL QUALIFICATION



www.gateway.ac.uk