

#MORETHANACOLLEGE



COURSE GUIDE

2024/2025



OPEN EVENTS

**THURSDAY 26TH
OCTOBER 2023**
5PM-7PM

**SATURDAY 28TH
OCTOBER 2023**
10AM-1PM

**THURSDAY 7TH
MARCH 2024**
5PM-7PM



gateway.ac.uk

With high student achievement and progression, an Ofsted 'Good' rating, and a wide range of subjects and courses from A-Level and Vocational Level 3 to T-Levels, GCSE and Entry Level, Gateway College is #MORETHANACOLLEGE

For information about virtual events and school careers activities go to www.gateway.ac.uk and follow us on social media.



CONTENTS

Welcome from College Principal	04	Post A Level / Level 3	38
Why choose Gateway College?	05	Level 3: Academic Pathway	40
Your Application Pathway	06	Level 3: Vocational Pathway	42
Entry Requirements	10	GCSE and Level 2	46-49
Study Programmes	12	Learning for Life and Work, Entry Level 3 – Level 1	50-53
Student Life	18-23	Mapping your Route to Success	54
Facilities and Resources	26	Travelling to Gateway College	55
Choosing your Future	28-31		
T-Levels	32-37		

WAYS TO APPLY

Apply Online

Visit www.gateway.ac.uk and complete our online application form.

Apply in Person

You can drop in and apply at: Gateway College, 17 Colin Grundy Drive, Leicester, LE5 1GA.

Apply by Post

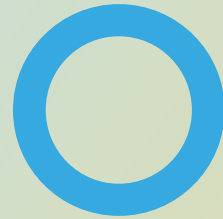
Send a postal application form to: Student Services, Gateway College, 17 Colin Grundy Drive, Leicester, LE5 1GA.

Find out more

For more information about how to apply, please email studentservices@gateway.ac.uk.

Every effort has been made to ensure the information contained is correct at the time of going to print. For the most current information go to www.gateway.ac.uk or email marketing@gateway.ac.uk for alternative formats.

MESSAGE FROM THE PRINCIPAL



Thank you for considering Gateway College as the important next step in your education.

As a Sixth Form College specialising in the education and progression of 16-19 year olds, there is so much that we can offer you. We have a strong reputation in supporting our students with the change from secondary school to sixth form and for challenging you to achieve more than you ever hoped. Starting with our expert advice and guidance, we will help you to choose the right subjects and pathway that will enable you to achieve your career goal and develop the skills and attitudes that will make you successful in your future, whatever your starting point.

Our results are good with many of our courses in the top 10% nationally for both achievement and value added, some are number 1. We are delighted that our strengths have been recognised by OfSTED who visited us in October 2019 and graded the college as Good. Coming to Gateway will give you access to our wide network of former students, employers and universities who all help to provide expertise, work experience, talks and mentorship to support your development.

JAMES BAGLEY
PRINCIPAL OF GATEWAY SIXTH FORM COLLEGE



WHY CHOOSE GATEWAY COLLEGE?

Gateway Sixth Form College has a long tradition of transforming young people's lives and preparing them for success. The College began as a boys Grammar School in 1928 and has evolved to become the modern, mixed Sixth Form College it is today.

In October 2019, Gateway Sixth Form was awarded a 'Good' grade 2 by Ofsted and continues to make significant gains year on year, resulting in exceptional exam results and student progression. The College strives to be outstanding and has received the following awards: Gold Mental Health Award for Schools, the Silver Artsmark Award, The Industry Choice Award for the NextGen VFX programme of study, the Sixth Form Colleges Association Award for Sustainability, the Eco-Schools Award for Sustainable Senior Leader, the Eco-Schools Award for Collective Values, Eco Schools Green Flag Award with Merit and a Tiny Forest, and was runner up for the Sixth Form Colleges Association Award for Curriculum Innovation.

In 2020 Gateway became one of the three founding members of the Better Futures Multi-Academy Trust (BFMAT) in association with Coventry University. The College delivers a mix of A levels, T levels, vocational qualifications from entry level to level 3 and GCSEs in maths and English. We are proud to play a role within our community and the communities we engage with across the city and county, inspiring young people to achieve their very best.



10% ABOVE NATIONAL AVERAGE

STUDENT PROGRESSION IS EXCELLENT: 10% ABOVE THE NATIONAL AVERAGE FOR STUDENTS PROGRESSING TO HIGHER EDUCATION AND EXCEEDING PREDICTED OUTCOMES

APPLICATION PATHWAY



01. Liaison - September to December '23

Engagement with schools by Gateway staff and student representatives to explain the application process and answer any questions regarding the College and entry in 2024.

02. Open Day - Saturday 28th October '23, 10am - 1pm

All are welcome to this free event. Meet staff and students, find out about courses, enrichments and support and see the first-rate facilities. Follow on social media and our website for additional online events.

03. Apply - November '23 to January '24

Students should apply online using the PS@16 system or directly through our website. Application forms can be obtained at www.gateway.ac.uk or email studentservices@gateway.ac.uk.

04. Interview - January to May '24

Applications are assessed, references are followed up and some students may be invited for interview if required. Conditional offers are made to successful applicants.

05. Decision - February to May '24

Applicants should decide whether to accept or decline their offer and notify the College of their decision.

06. Welcome - June to July '24

Applicants are invited to a Welcome Event with taster sessions and activities to ensure they have picked the right courses.

07. Enrolment - August '24

Successful applicants are invited to attend an enrolment appointment to register on their chosen programme of study, receive their timetable and induction details. Every student will receive an individual appointment.

#MORETHANACOLLEGE



Muskan came to the UK from India with her family in 2019 and fully embraced the opportunities presented to her when she joined Gateway College.

Muskan has worked diligently through Level 2 programmes to gain access onto BTEC Level 3 Science and is now beginning a degree at De Montfort University to start her course in Medicine Pharmacy.

In addition to her studies, Muskan also became the Student Principal of the Student Union and worked part-time in a pharmacy, demonstrating her commitment and focus on achieving her dream of a career in medicine.



“The support and belief in me was demonstrated every day by the passion in my teachers. They whole-heartedly instilled in me that I could reach my goal. They supported me through difficult and challenging times and the extra opportunities provided internally and by the Colleges partners fully supported my aspirations.”

Muskan

Results achieved

CTEC Level 2 Science: Distinction

GCSE Maths: 6

BTEC Level 3 Science: Triple Distinction

Next Steps

Pharmacy MPharm (Hons) at
De Montfort University (DMU)



ENTRY REQUIREMENTS



ACADEMIC OR VOCATIONAL PATHWAY



LEVEL
3

You will usually need to have achieved 5 or more GCSE grades 9 - 4 including English Language and Maths. Some courses may have additional entry requirements.

Progression to: University, Higher/Degree Apprenticeships, Employment

T-LEVELS

LEVEL
3

You will need to have achieved 5 or more GCSE grades 9-4 including English Language and Maths.

Progression to: University, Higher/Degree Apprenticeships, Employment

T-LEVEL TRANSITION

LEVEL
2

You will need 4 GCSEs at Grade 9-4 including either GCSE Mathematics or English Language at Grade 4. Minimum grade 3 in the other GCSE or core subject.

Progression to: T-Levels

VOCATIONAL PROGRAMME

LEVEL
2

GCSEs at grade 3 or 2, or Pass in a Level 1 Vocational Programme, including English Language and Maths (grade D/3) or Functional Skills Level 1.

Progression to: Level 3, Apprenticeship or Employment

ENTRY AWARDS + CERTIFICATES - FOUNDATION LEARNING

LEVEL
1

GCSEs at grade 2 and 1, including English Language and Maths or Functional Skills or Entry Level success.

Progression to: Level 2

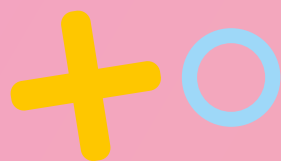
ENTRY LEVEL 2 - FOUNDATION LEARNING

LEVEL
1

GCSEs at grade 1 or other qualifications or assessment.

Progression to: Level 1





STUDY PROGRAMMES

LEVEL 2: T LEVEL FOUNDATION PROGRAMME

PAGE
34

- Management and Administration
- Digital
- Health*
- Education*
- Science*

* GCSE Biology to be offered in addition to Foundation programme where required

LEVEL 3: T LEVELS

PAGE
36

- Craft and Design: Pathway into Textiles and Fashion
- Education: Pathway to Early Years Educator
- Media: Pathway into Broadcast and Production
- Digital Business Services: Pathway into IT
- Health: Pathway into Adult Nursing
- Science: Pathway into Laboratory Science
- Management and Administration: Pathway into Business

POST A LEVEL / LEVEL 3

PAGE
38

One Year Post Level 3 Qualification

- Pre-Degree Foundation Studies in Art and Design

LEVEL 3 : ACADEMIC PATHWAY

PAGE
40

Two Year Advanced Level | Choose 3 to 4 subjects

- Accounting
- English Literature
- Physics
- Art
- Health and Social Care
- Psychology
- Biology
- Law
- Sociology
- Business Studies
- Maths
- Textiles
- Chemistry
- Mathematical Studies (Core Maths)
- Criminology
- Media Studies
- Economics
- Photography
- English Language



LEVEL 3: VOCATIONAL PATHWAY

PAGE
42

Two Year Advanced Level | Choose 1 subject

- Art and Design
- Business
- Creative Media Practice
- Health and Social Care
- Information Technology (IT)
- NextGen Games Animation and VFX
- Applied Science

LEVEL 2: GCSE

PAGE
46

- English Language
- Maths

LEVEL 2: VOCATIONAL

PAGE
48

- Art and Design
- Business
- Health and Social Care
- IT
- Media
- Science

ENTRY LEVEL 3 - LEVEL 1: LEARNING FOR LIFE AND WORK

PAGE
50

Entry Level 3 - Level 1

- Business Administration
- Creative Arts and Media
- English Functional Skills
- Health and Social Care
- Information Technology (IT)
- Maths Functional Skills
- Multi-Skills
- Personal and Social Development (PSD)
- Science
- Supported Internship Programme

#MORETHANACOLLEGE

We are proud to serve our communities and to create outstanding life opportunities for young people



- Sixth form Colleges **Association Award for Sustainability** 2023
- Sixth Form Colleges **Association Award for Curriculum Innovation** (runner up) 2023
- Eco-Schools **Award for Sustainable Senior Leader** 2023
- Eco-Schools **Award for Collective Values** 2023
- Eco-Schools **Green Flag Award with Merit** 2023
- **Finalists in the UK Maths Trust (UKMT)** Regional Maths Challenge 2023
- Winner of the **Industry Choice Award for the NextGen VFX** Programme of Study 2023 as voted on by industry professionals. See the winning animation 'Spitfire' [here](#).
- Selected for **Sixth Form Colleges Association national exhibition**. Click [here](#) to view.
- Project Search - **innovative partnership with LCC and UHL** to support students with complex needs
- **First Sixth Form College** to be designated to deliver **T Levels in the city**
- **Only Sixth Form College** in the city to deliver **NextGen Games Animation and VFX** programme
- East Midlands host for **The BBC Dragons Den Post-Mortem Live Experience**



MEETING THE NEEDS OF YOUR FUTURE



Gateway has forged strong relationships with employers, community groups, universities and funders to ensure students are provided with the best possible opportunities to place them at the forefront when considering their future progression.

Innovative partnerships with Coventry University, De Montfort University, the University of Leicester, T level Industry placement providers, NextGen and University Hospitals Leicester (UHL) to name but a few, have created diverse learning experiences.

SUPPORTED INTERNSHIPS

The Supported Internship Programme helps young people aged 16 to 24 with complex learning difficulties or disabilities to find work. The scheme runs for 12 months and places interns in a suitable job or work experience as well as creating a unique study programme and on-the-job training with expert coaches responsible for supporting both interns and their employers, see Page 51.

PROFESSIONAL EXPERIENCE

Bespoke industry placements are embedded within a broad range of study programmes; from Project Search and the Supported Internship for LLW learners to T Levels, BTECs, summer schools the enrichment programme. This exposure prepares students for their next steps, creating opportunities for future progression, learning and employment and enabling young people to make informed choices about their futures, see page 17.

“The Careers Team suggested I apply for the Med programme at the University of Leicester to gain some medical experience and a qualification. During this time doctors carried out presentations on a range of topics and at the end of the course, I gave my own presentation. The experience boosted my confidence and really helped with my application for university.”

Muskan



CAREER AND PROGRESSION ADVICE



The Careers Service at Gateway offers tailored 1:1 career advice and guidance with our qualified team. There are also opportunities to attend university taster days, access to apprenticeship providers, employers, academics and industry professionals. Careers and progression activities take place throughout the academic year, including a large Higher Education (HE) Fair.

The Careers Service has strong relationships with both local and national universities, including those from the Russell Group. These provide opportunities for students at the College and also on their campuses. Students take part in Oxford and Cambridge taster days to raise aspirations and application standards.

The College has relevant, up-to-date information to support students in areas such as making a university application, Personal Statement writing, finding the right apprenticeship and studying abroad.

WORK PLACEMENT AND COMMUNITY ENGAGEMENT



At Gateway we understand that students need more than just excellent results to stand out to a prospective employer or to gain their first choice of university. Our Careers and Employability Team skilfully develop a comprehensive package of relevant work-related opportunities for every student to gain valuable additional skills and insight into the sector of work they are interested in. Careers activities include employability tutorials, interactive workshops and visits to skills and careers fairs in addition to industry placements where required.

The Careers Strategy Plan is set out to reflect the expectations of the Gatsby Benchmarks, allowing us to provide excellent careers and employability

provision. We use Labour Market Information and Destination Data when supporting students to make informed career decisions, creating a successful careers and employability programme to cater for students from across the curriculum.

The College has good links with a wide network of local employers and community organisations who also offer students work placements, industry visits, speakers, masterclasses and information stands in the College. In addition to this, students can participate in programmes designed to bridge the journey from education to employment such as our new T levels programme (Page 34) and the Supported Internship Programme (Page 51).

For more information visit www.gateway.ac.uk



LEARNER EXPERIENCE

WE OFFER A BROAD ENRICHMENT PROGRAMME TO STUDENTS, ACTIVITIES INCLUDE:



- Badminton
- Gym
- Basketball
- LGBTQ+
- College Magazine
- Science Club
- Cricket
- Table Tennis
- Debate Club
- Volleyball
- Football

GATEWAY ATTRIBUTES

- Get things done
- Act with integrity
- Adapt my approach
- Think creatively
- Communicate effectively
- Remain positive

“WE ARE NOT LOOKING FOR PERFECTION, BUT REFLECTION AND CHANGE.”



THE STUDENT EXPERIENCE TEAM

Ensuring you have an outstanding experience is at the heart of the work that the Student Experience Team undertake. The work that the Head of Student Experience, the Pastoral Leaders (PL's) and the Learner Performance Tutors (LPT's) do is focused on support, guidance and ensuring you have every opportunity to experience a full and exciting Programme of Study (PoS). Gateway College prides itself on the support and care we provide to our students, and the positive impact this has.

If you need access to additional support, careers or counselling advice the Student Experience Team are your first point of call. You will have a weekly group tutorial, and regular 1-1 sessions with a specially assigned LPT whose aim is to monitor and ensure that you are on track to complete to your full potential. There are also opportunities to enjoy your successes with celebration assemblies, termly and half-termly prizes up for grabs. The Student Experience Team will support you through the UCAS process, provide help to research and find suitable universities, provide opportunities to secure apprenticeships, or enter the world of work if this is your goal.

SCHOOL TRANSITION

We aim to develop the full potential of every student. We care about each individual, which is why we work closely with your school so that you will have a smoother transition into college life. We attach great importance in helping each of you to achieve your full potential and a wide range of support is available to ensure you reach your goals.

NUS

Membership of the National Union of Students (NUS) is available to all Gateway students.

BOARD OF GOVERNORS

Membership of the National Union of Students (NUS) is available to all Gateway students.

STUDENT SERVICES

Open throughout the College day, the team provide advice and guidance on a range of issues, including how to apply for financial support with meals, transport and equipment.

STUDENT VOICE

Two places are available each academic year for student representatives to sit on the College Board of Governors, representing the student experience.

In addition to this each year students are elected by their peers to represent their views on the Student Union (SU). This is the voice of the student body, and this is where issues and concerns are raised and discussed. They also arrange trips and fundraising events. The SU mirror the Leadership Team of the College and as such, play a focal role in the development of key strategies for students.

FINANCIAL HELP

The Government provides funding to support students experiencing financial hardship whilst studying at the College. These funds are prioritised for students in financial hardship and are administered by the Student Services Team. All students are invited to apply.



STUDENT WELFARE

Gateway Sixth Form College is positively committed to ensuring that people with disabilities, including those with learning differences and mental health needs, are supported in accessing opportunities for learning at the College.

The College will as far as possible through reasonable adjustments, change practices or environments to remove any disabling effects or barriers to participation in order that students can fully participate in the education, facilities and services provided by the College.



EQUALITY, DIVERSITY AND INCLUSION

Gateway Sixth Form College is committed to providing an environment which values all individuals equally. The College encourages full participation by all, focusing on maximum achievement for each individual. Everyone at Gateway Sixth Form College has the right to freedom from discrimination at all times, regardless of disability, ethnicity, religion, gender or sexuality.

Any form of verbal or physical behaviour which undermines an individual's sense of worth or feeling of security will not be tolerated. We pride ourselves on having staff from a range of backgrounds who can help translate information into different languages and act as role models.

PREVENT DUTY

Section 26 of the Counter-Terrorism and Security Act 2015 places a duty on educational bodies to have 'due regard to the need to prevent people from being drawn into terrorism'.

At Gateway, we incorporate our duties under the Government's Prevent agenda within our approach to Safeguarding.

COUNSELLING SERVICE

Gateway Sixth Form College's Counselling Service is confidential and non-judgemental. The Counsellor can provide help and support for students experiencing a particular difficulty in their life with relationships, College, health etc.

For more information visit www.gateway.ac.uk

SAFEGUARDING

Gateway Sixth Form College has a statutory and moral duty to ensure that the College functions with a view to safeguarding and promoting the welfare of the young people and vulnerable adults studying at the College.


We take the safety of our students very seriously. This includes health and safety practice on College premises and students' own personal safety and wellbeing. You can speak to a member of the Safeguarding Team at any time if you have any worries or concerns about your own or anyone else's safety and wellbeing.

Our Safeguarding Team are well trained and experienced in supporting students with a range of personal issues including domestic violence, sexual exploitation, forced marriage, homelessness and any concerns relating to extremism or radicalisation.

FUNDAMENTAL BRITISH VALUES

These values are defined as 'democracy, the rule of law, individual liberty and mutual respect and tolerance for those with different faiths and beliefs'.

Gateway Sixth Form College encourages its students and staff to respect other people with particular regard to the protected characteristics set out in the Equality Act 2010.



Students behave very well, attend well and have a positive attitude towards their studies. They make a substantial contribution to the calm, orderly learning environment. They participate fully in lessons and demonstrate resilience in the face of challenges.

Ofsted Report; Rated Good.

STUDENT SUPPORT



LEARNING DISABILITIES & LEARNING DIFFERENCES

Gateway Sixth Form College provides high quality teaching and learning, working with a wide range of students in a supportive and caring environment. The College has a fully integrated provision for students with learning disabilities, learning differences and mental health needs. Student needs can vary greatly; we make all reasonable adjustments possible to enable you to access your chosen course.

Please declare your learning disability, learning difference or additional needs on your application form and at the interview so that the appropriate support can be planned. When support is requested, the Learning Support Team will assess and allocate support.

LEARNING FOR LIFE AND WORK

Here at Gateway Sixth Form College we offer courses at Entry Level and Level One. These courses are suitable for students who may have struggled at school for different reasons and are not yet ready for Level Two or employment. They offer the chance to try out different vocational subjects whilst at the same time developing English and Maths skills.

We know it is also important to develop the right attitude and skills for progression to further study and work and to assist in this, a range of enrichments are provided. Students will be allocated a Personal Tutor to support them in their transition from school to College who will be able to help set targets and provide motivation.

WE OFFER THE FOLLOWING SUPPORT

- + 1 to 1 in class support
- + Shared in class support
- + 1 to 1 out of class support
- + Specific learning difference e.g. Dyslexia
- + Physical disability
- + Specialist ICT equipment
- + Literacy and Numeracy workshops to improve standard of work
- + Personal care
- + Special exam arrangements
- + Specialist software/ specialist ICT equipment
- + Visual impairment
- + Hearing impairment
- + Study skills/time management
- + Counselling

For more information visit www.gateway.ac.uk

#MORETHANACOLLEGE



97%
A LEVEL
PASS RATES

**A LEVEL PASS RATES
HAVE INCREASED
WITH 97% OF
LEARNERS PASSING
THEIR COURSES.**

Based on 2023 exam results



"I enjoyed studying at Gateway, there was a fun atmosphere. I have made some good friends."

My advice to new students is to be focussed and work hard in your first year, don't get distracted!"

Leya

Results Achieved

Art A Level: A

Law A Level: A*

Psychology A Level: A

Previous School

Soar Valley College

Next Steps

To go to the University of Leicester Law School to study a degree in Law LLB

FACILITIES AND RESOURCES



LEARNING RESOURCE CENTRE

The Learning Resource Centre (LRC) is at the heart of the College located in 'The Street' and holds a stock of over 20,000 books, magazines, daily newspapers and a Careers Library to support students' studies. The LRC is a flexible study area with individual study tables, a reading area, small group working areas and a silent study area. There are 21 computers, 12 fixed laptops, a bank of mobile laptops available for loan and wireless phone chargers for use. There is also an Independent Study Centre with computers and study tables for 100 learners on the Mezzanine Floor.

We have an Independent Study Centre with computers and study tables for 100 learners in addition to our Learning Resource Centre.



IT FACILITIES

Gateway has over 500 PCs in classrooms and the LRC. In addition to these, there are over 100 laptops for students to use as additional learning resources. A Web Filtration System operates on the College network protecting students from accessing restricted websites and content. Computer Suites and the LRC utilise Net Support School software to monitor and manage activity.

Students can access any of the software installed on the network, for example, MS Office 365 and Adobe software. They can also download Microsoft Office 365 onto their own devices completely free of charge for the duration of their time at Gateway.

Printers and Multi-Functional Devices (MFD's) are situated in the LRC, Independent Study Centre and the IT Suites.

INFORMATION AND DATA ENVIRONMENT

Gateway has several computerised systems which allow staff to calculate students' target grades based on their GCSE results and provide Individual Learning Plans for each student which detail their attendance, punctuality, attitude to work, subject targets and assignment deadlines.

From this information we can assess whether the student is working at their full potential or if support is required. These highly detailed monitoring systems have been critically important in understanding how our students are progressing and what we can do to help them achieve. This information is shared with parents and guardians.

WE OFFER THE FOLLOWING FACILITIES

- + 3D Design Workshop
- + Accessible Kitchen (LLW)
- + Art and Design Studios
- + Canteen
- + Conference Space
- + Fashion and Textiles Workroom
- + Gym
- + Independent Study Centre
- + Learning Resource Centre (LRC)
- + NextGen Games Design Studio
- + Photography Studio
- + Reflection Rooms
- + Science Laboratories
- + Sports Facilities: MUGA Pitch and Sports Hall
- + 'The Street' – communal area
- + T Levels Business Centre
- + T Levels Health Suite
- + T Levels IT Hub

For more information visit www.gateway.ac.uk





CHOOSING YOUR FUTURE

CHOOSING THE RIGHT PATHWAY

DECIDING WHAT AND WHERE TO STUDY NEXT IS A BIG DECISION

There is so much choice! With many new courses to consider, this prospectus has been designed to take you through the process step-by-step to help you make the right decision for your future.

In addition to attending our Open Days and Open Evenings to meet staff and students and see our first-rate facilities.

We invite you to explore the next section which explains pathways and programmes of study, in

For more information about courses, go to our website: www.gateway.ac.uk

WHAT CAREER ARE YOU INTERESTED IN?

Think about what careers you are interested in and research what subjects are needed for these.

WHAT SUBJECTS ARE YOU INTERESTED IN?

Think about which subjects you enjoy and where your strengths lie; your GCSE results will play a part in your course choices.

WHAT MOTIVATES YOU AS AN INDIVIDUAL?

Find out about the new subjects you can choose.

HOW DO YOU LIKE TO LEARN?

Do you like exams, coursework or prefer work placements?

WHERE DO YOU LIKE TO LEARN?

There are lots of environments you can learn in depending on the course you choose. Some examples include, a classroom, a science lab, a health suite, a gym or a workplace.

For more information visit www.gateway.ac.uk

ACADEMIC, VOCATIONAL OR T-LEVELS?

At Gateway College we offer three separate pathways at Level 3 for students to choose between; the Academic Pathway, the Extended Diploma Vocational Pathway and the T-Level Pathway. The pathways are very different and your choice will depend on a number of factors including, how you enjoy learning, your level of achievement, the subject and your career aspirations.

HOW DO THE THREE PATHWAYS COMPARE?

	Academic Pathway Level 3: Two Year Advanced Level	Extended Diploma Pathway Level 3: Two Year Vocational	T-Levels
Duration	2 years	2 years	2 years
Entry Requirements	Most courses require 5 or more GCSE grades 9-4 including English Language and Maths however some vary, such as in the Sciences.	5 or more GCSE grades 9-4 including English Language and Maths	5 or more GCSE grades 9-4 including English Language and Maths
Courses	Choose 3 to 4 courses	Choose 1 course	Choose 1 course
Assessment	Exams at the end of the 2 year programme	A combination of coursework during the 2 year programme with some exams	A combination of coursework and workplace assessment during the 2 year programme with some exams
Progression Opportunities	University, Higher/Degree Apprenticeships, Employment	University, Higher/Degree Apprenticeships, Employment	University, Higher/Degree and NVQ Apprenticeships, Employment
For more information	Go to Page 40	Go to Page 42	Go to Page 32-37

For more information visit www.gateway.ac.uk

T-LEVELS

THE NEXT LEVEL QUALIFICATION



EQUIVALENT TO 3 A LEVELS

T-Levels are an alternative to A levels, apprenticeships and other 16 to 19 courses. Equivalent to 3 A levels, a T-Level focuses on vocational skills and can help students into skilled employment, higher study or apprenticeships.



A 45-DAY INDUSTRY PLACEMENT

Each T-Level includes an in-depth industry placement that lasts at least 45 days. Students get valuable experience in the workplace; employers get early sight of the new talent in their industry.



80% CLASSROOM, 20% WORK

T-Level students spend 80% of the course in the classroom, learning the skills that employers need. The other 20% is a meaningful industry placement, where they put these skills into action.

ARE YOU
READY
FOR THE
NEXT **T** LEVEL?



T-LEVELS

THE NEXT LEVEL QUALIFICATION



STUDY T-LEVELS AT GATEWAY COLLEGE

We are proud to be the only Sixth Form College in the City to offer T-Levels to students. Opportunities are available at both Level 2 and Level 3.

The Level 2 T-Level Foundation Programme is a direct pathway to the Level 3 T-Level and should only be chosen with this intention. The Level 2 lays the groundwork for the Level 3 and provides students with the tools required to progress.

The Level 3 T-Level pathway is a combination of both classroom-based learning, exams and industry placement that will provide technical and specialist 'on the job' knowledge and experience.

T-Levels were launched by the Department for Education (DFE) in September 2020 as a response to skills gaps identified by industry leaders. These unique programmes of study have been designed in unison with educators and business to ensure young people are work-ready in a competitive global marketplace.

On completing a T-Level, students may progress on to an apprenticeship, a higher degree apprenticeship, university or related employment.

Watch this video to find out more about

T-Levels: www.youtube.com/watch?v=7rua65bHjMw

LEVEL 2: T LEVEL FOUNDATION PROGRAMME

To be taken as a pathway to a Level 3 T-Level.

+ MANAGEMENT AND ADMINISTRATION

+ DIGITAL
+ Certificate in Data

+ EDUCATION*

+ HEALTH*

+ SCIENCE*



* GCSE Biology to be offered in addition to Foundation programme where required

For more information visit www.gateway.ac.uk



LEVEL 3: T LEVELS

Students may apply for a Level 3 T-Level directly or progress from the Level 2 T-Level Foundation Programme.

Students will choose one subject from the menu below. Each course is equivalent to 3 A Levels and is a combination of both classroom-based learning, exams and an industry placement that will provide technical and specialist 'on the job' knowledge and experience.

T-Levels were launched by the Department for Education (DFE) in September 2020 as a response to skills gaps identified by industry leaders. These unique programmes of study have been designed in unison with educators and business to ensure young people are work-ready in a competitive global marketplace.

On completing a T-Level, students may progress on to an apprenticeship, a higher degree apprenticeship, university or related employment.

To find out more about T-Levels view the videos below:

www.youtube.com/watch?v=KBGVopFzq5M&list=PL6gGtLyXoeq-rt4HRUDy_MY77BEH7r9Rc&index=9

www.youtube.com/watch?v=gVtUEXWBZDA&list=PL6gGtLyXoeq-rt4HRUDy_MY77BEH7r9Rc&index=18

"Gateway has been a great experience. The teachers are caring and passionate and their passion for the course helped me to thrive. They want you to do well and keep pushing and pushing you to achieve your best."

Shayan

Next Steps

Abertay University in Scotland – BA (Hons)
Computer Arts



LEVEL 3

+ CRAFT AND DESIGN (PATHWAY INTO TEXTILES AND FASHION)
Level 3 (Equivalent to three A levels)

+ DIGITAL BUSINESS SERVICES (PATHWAY TO IT)
Level 3 (Equivalent to three A levels)



+ EDUCATION (PATHWAY TO EARLY YEARS EDUCATOR)
Level 3 (Equivalent to three A levels)

+ HEALTH (PATHWAY INTO ADULT NURSING)
Level 3 (Equivalent to three A levels)



1. Adults
2. Midwifery
3. Mental Health
4. Children and Young People
5. Therapy Teams

+ MANAGEMENT AND ADMINISTRATION (PATHWAY INTO BUSINESS)
Level 3 (Equivalent to three A levels)



+ MEDIA (PATHWAY INTO BROADCAST AND PRODUCTION)
Level 3 (Equivalent to three A levels)

+ SCIENCE (PATHWAY INTO LABORATORY SCIENCE)
Level 3 (Equivalent to three A levels)

For more information visit www.gateway.ac.uk



POST A LEVEL /
LEVEL 3



PRE-DEGREE FOUNDATION STUDIES IN ART AND DESIGN

This is a one year course, students must be 17 or over to apply. Students choose this course after completing their Level 3 qualification(s) to prepare them for applying for a creative degree course at university.

The Pre-Degree Foundation course at Gateway College has an excellent reputation, with *100% of students successfully obtaining a place at university or in employment in a related field e.g. Graphic Design, Illustration, Surface Decoration, Fashion Design, Textile Design, Costume Design, Decorative Artefacts, Product Design, Jewellery, 3D, interior design, Architecture, Fine Art and Photography.



@artdesign_gatewaycollege



100%
SUCCESS RATE

"I enjoyed the 'Fashion by nature' project and the life drawing which I had never done before. My favourite project was based on the Arts and Crafts Movement where I made wallpaper. I have learnt lots of new techniques and have developed my own skills and personal style."

Tisha has been accepted on her first choice to study BA (Hons) Textiles at Nottingham Trent University

For more information visit www.gateway.ac.uk

100% A level pass rate with Art, Business Studies, Economics, Extended Project, Media, Photography and Sociology coming out on top.

LEVEL 3: ACADEMIC PATHWAY

Choose 3 subjects from the courses below to create your own bespoke Programme of Study. Gifted and talented students may choose 4 subjects if recommended at interview.

+ ACCOUNTING
A Level

+ LAW
A Level

+ ART
A Level

+ MATHS
A Level

 @artdesign_gatewaycollege

+ BIOLOGY
A Level

+ MATHEMATICAL STUDIES
(CORE MATHS)
Level 3 (Equivalent to one A Level)

+ BUSINESS STUDIES
A Level

+ MEDIA STUDIES
A Level

+ CHEMISTRY
A Level

+ PHOTOGRAPHY
A Level

+ CRIMINOLOGY
Level 3 (Equivalent to one A Level)

+ PHYSICS
A Level

+ ECONOMICS
A Level

+ PSYCHOLOGY
A Level

+ ENGLISH LANGUAGE
A Level

+ SOCIOLOGY
A Level

+ ENGLISH LITERATURE
A Level

+ TEXTILES
A Level

+ HEALTH & SOCIAL CARE
Level 3 (Equivalent to one A Level)

All A Level
courses:



High Grades for Level 3 Vocational courses and 100% pass rates across the curriculum including Art and Design, Business, Creative Media Practice, IT and NextGen VFX and Animation.

LEVEL 3: VOCATIONAL PATHWAY

Gateway College offers a range of Vocational Level 3 Extended Diploma courses. Students will choose only one subject from the list below to study in depth over two years.

Each course is equivalent to three A Levels.

+ ART AND DESIGN

Level 3 (Equivalent to three A Levels)



@artdesign_gatewaycollege



+ INFORMATION TECHNOLOGY (IT)

Level 3 (Equivalent to three A Levels)



+ BUSINESS

Level 3 (Equivalent to three A Levels)



+ NEXTGEN GAMES ANIMATION AND VFX

Level 3 (Equivalent to three A Levels)



+ CREATIVE DIGITAL MEDIA PRACTICE

Level 3 (Equivalent to three A Levels)



@gatewaycollege_nextgen

+ HEALTH AND SOCIAL CARE

Level 3 (Equivalent to three A Levels)



+ APPLIED SCIENCE

Level 3 (Equivalent to three A Levels)



WINNER OF THE INDUSTRY CHOICE AWARD FOR THE NEXTGEN VFX PROGRAMME OF STUDY 2023 AS VOTED ON BY INDUSTRY PROFESSIONALS AND EDUCATORS

Click here to view 'Spitfire':
www.youtube.com/watch?v=FEqxwrovIhg

For more information visit www.gateway.ac.uk

T-LEVELS

THE NEXT LEVEL QUALIFICATION

We are pioneers. The first Sixth Form College in the city to offer T levels and are thrilled with the results and feedback from employers. We look forward to growing our T Level provision as we offer more young people the opportunity to learn in diverse and unique environments, laying the building blocks for their futures.

“Congratulations to all of our students on completing the first year of the T level. It has been a challenging but enjoyable year. The students have worked exceptionally hard and teachers have tasked them to achieve their very best and meet their full potential.”

Rose, Teacher of T Level Health

Students who undertake English and mathematics GCSEs achieve exceptionally well.
Ofsted Report; Rated Good

LEVEL 2: GCSE

We understand how important it is for students' progression to achieve a grade 4 or above in their GCSE English and Maths. By attaining these grades, students are able to proceed to a Level 3 qualification and from here onto a range of opportunities which will enhance their career options and life prospects.

The value of this cannot be underestimated, and at Gateway we have recognised this by investing in focussed teaching and outstanding support for our students.

+ ENGLISH
LANGUAGE
GCSE



+ MATHS
GCSE



RUNNERS UP IN THE UK
MATHS TRUST (UKMT)
REGIONAL MATHS
CHALLENGE FINAL 2023

For more information visit www.gateway.ac.uk

College staff go beyond their expectations and provide extra help and support before, during and after lessons.

Ofsted Report; Rated Good

LEVEL 2: VOCATIONAL

This is a one year programme and students take one Level 2 subject alongside their GCSE Maths and/or English re-sit if required.

+ ART AND DESIGN

Level 2 (Equivalent to 3 GCSEs)



@artdesign_gatewaycollege

+ IT

Level 2 (Equivalent to 3 GCSEs)



+ BUSINESS

Level 2 (Equivalent to 3 GCSEs)



+ MEDIA

Level 2 (Equivalent to 3 GCSEs)



+ HEALTH AND SOCIAL CARE

Level 2 (Equivalent to 3 GCSEs)



+ SCIENCE

Level 2 (Equivalent to 3 GCSEs)



GATEWAY ACHIEVED HIGHER GRADES, A GREATER PROGRESSION FROM LEVEL 2 TO LEVEL 3 AND SAW MORE STUDENTS OFF TO UNIVERSITY AND HIGHER APPRENTICESHIPS.

Based on 2023 exam results

For more information visit www.gateway.ac.uk



ENTRY LEVEL 1-3: LEARNING FOR LIFE AND WORK (LLW)

We offer courses at Entry Level and Level One. These courses are suitable for students who may have struggled at school for different reasons and are not yet ready for Level Two or employment.

They offer the chance to try out different vocational subjects whilst at the same time developing English and Maths skills. Students will be allocated a Personal Tutor to support them in their transition from school to College who will be able to help set targets and provide motivation.

+ BUSINESS ADMINISTRATION

Level 1

+ CREATIVE ARTS AND MEDIA

Level 1

+ ENGLISH FUNCTIONAL SKILLS

Entry Level 1 - 3

+ HEALTH AND SOCIAL CARE

Level 1 and 3

+ INFORMATION TECHNOLOGY (IT)

Level 1

+ MATHS FUNCTIONAL SKILLS

Entry Level 1 - 3

+ MULTI SKILLS

Level 1

+ PERSONAL AND SOCIAL DEVELOPMENT (PSD)

Level 1

+ RETAIL

Level 1

+ SCIENCE

Level 1

+ SUPPORTED INTERNSHIP PROGRAMME

All LLW
courses:



For more information about support at Gateway go to page 22

GETTING INTO WORK

THE DFN PROJECT SEARCH ENTRY REQUIREMENTS

Launched in June 2023, this innovative collaboration is a one year Supported Internship programme of study. The course is a partnership between DFN Project Search, Leicester City Council (LCC), University Hospitals Leicester (UHL) Glenfield Hospital and Gateway Sixth Form College.

Each student will undertake three different work placements with each placement lasting for 10-12 weeks. Students are supported via a job coach.

The students will also have one day a week at college which will cover the following:

- + Health and safety
- + Interview skills
- + CV Writing
- + Dress to Impress
- + Communication skills
- + Healthy lifestyles
- + Travel training
- + Units to develop wider Employability skills

- + No formal qualifications are needed
- + You must have an EHCP
- + You must be willing to undertake travel training or be travel trained
- + You must want to gain employment
- + Potentially 18 years of age to work in NHS

PROGRESSION

The course is not linked to a formal qualification. The aim of the course is that it will lead to paid employment.

MEET OUR STUDENTS

Scan below to read some student case studies



99%
PASS
RATE

LEVEL 1 LEARNERS
ACHIEVED A 99%
PASS RATE. THIS IS
SIGNIFICANTLY HIGHER
THAN PREVIOUS
YEARS AND EXTERNAL
BENCHMARKS.

Based on 2023 exam results



NOTES

COURSES I AM INTERESTED IN...

Are they single courses or to be taken in combination with others?

See Pages 12-13 for more information.

WHAT ARE THE ENTRY REQUIREMENTS?

See Page 11 and www.gateway.ac.uk for more information about individual courses.

PROGRESSION ROUTES AND CAREER PATHWAYS...

Are they single courses or to be taken in combination with others?

See Page 29 and www.gateway.ac.uk for more information about individual courses.



GETTING TO GATEWAY

ON FOOT

Gateway College is a 5 minute walk from Hamilton Town centre (via Tesco Hamilton) using the Gateway Bridge, and a 10 minute walk from McDonalds on the Hungarton Boulevard.

BY BIKE

The 'Sustrains' national cycle route, which runs parallel to Hamilton Way (A563) and across the Gateway Bridge, passes through the College site.

BY CAR

To access the College from the city centre it is a 15 minute drive via the **A607, Melton Road**, and then turning right onto the **A563, Hamilton Way**, which forms the northern part of the Ring Road. Alternatively, the **A47, Uppingham Road**, can be used turning left onto the **A563, Colchester Road** and **Hungarton Boulevard**.

BY BUS

All of the main bus companies run services to Hamilton Centre:

Arriva: 58, 58a

First: 38, 38a

Centre bus: 40

UHL: Hospital hopper



To work out your own route to Gateway, whether by foot, car, bike or public transport, go to: www.choosehowyoumove.co.uk



CONTACT US TODAY:

studentservices@gateway.ac.uk
0116 274 4545

Gateway Sixth Form College
Colin Grundy Drive
Leicester, LE5 1GA

www.gateway.ac.uk

