



Learning for Life and Work

For students starting
in 2024/2025



Welcome to Learning for Life and Work

Coming to Gateway College represents making a big decision in your life. This change includes facing new challenges, new changes, new freedoms and making decisions for yourselves with greater independence in your learning. We know how difficult this can be and we want to help you to make sure you get the right level of support and care at college.

In the Learning for Life and Work (LLW) programme area you will find the following:

- A team of dedicated specialist staff
- Educational Care Support Workers to provide support and care in lessons and outside
- Workshop areas
- A garden area
- A kitchen and Pop-Up Cafe area
- Pod areas with IT facilities
- A discrete classroom area for multi-skills
- A safe area to work 1 to 1
- Access to all floors
- Disabled/changing toileting areas
- Summer house to practice independent living
- The sweet market shop to develop employability skills

The majority of teaching and learning takes place within one pod area which means you will feel safe and secure.



Anjali (19 years old) Ellesmere College

"I like attending Gateway College because I have made lots of friends and like the subjects I am doing. My best lessons are Art and Maths. This is a picture of me cooking and developing Independence Skills. I have been developing my skills to get ready for work. This year I am doing a Supported Internship."



What Level 1 courses can I do at Gateway?

We have a number of different courses which are designed to move you a step closer to the career of your choice.

We will develop a programme of study which is unique to you, focused around your skills, knowledge, previous qualifications gained including Maths and English and your ambitions for your future.

Your timetable will be made up of different subjects and these are offered at different levels according to your ability. Core aspects are:

English	Maths	Vocational Subject
Tutor Group	Personal Social Development	

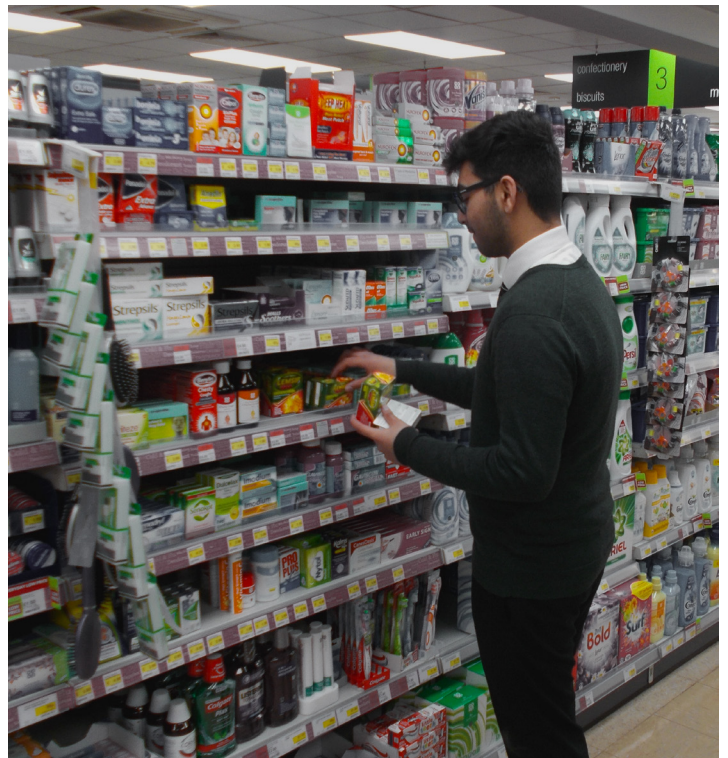
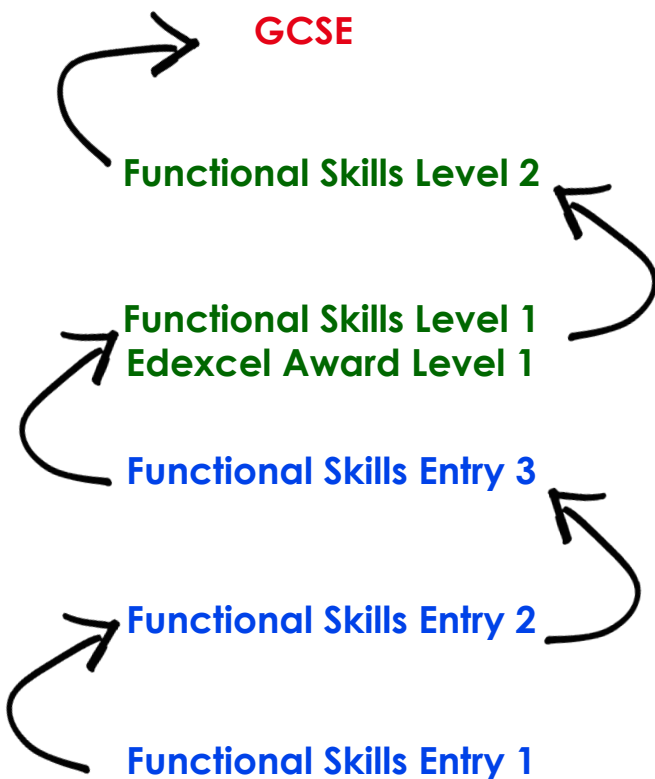
You can choose one of these vocational subject, below are:

Retail	IT	Creative Arts and Media	Business Administration	Science
Multi Skills	Personal and Social Development		Health and Social Care	

For each course you will be assessed by completing a portfolio of evidence to show you have met the evidence requirements of each qualification.

Maths and English Courses

We have a range of courses in Maths and English. Your teachers will support you to improve your skills and you will work towards qualifications at a level which suits you.



Work Experience and Careers

All students complete 1 week of work experience throughout the year. Developing and exploring careers is threaded through all our vocational pathways.

Preparing for adulthood: Specialist Pathways

We provide specialist pathways for young people aged 16-25 with a range of special educational needs and disabilities/SEND.

Our students will study with us for 3 or 4 days a week if agreed with the local authority.

Each student has an individual study programme that helps them make progress in key areas including:

Social and life skills

Employability and or independence Development or English and Maths

Vocational/Enterprise experience

Students will complete baseline assessments within the first 6 weeks of being on course and then individual goals/progress steps set on a termly basis.

Pathway 1: Multiskills (Personal Development)



This pathway helps students to develop social skills, an ability to look after themselves and to self-manage their own emotions and feelings.

Students also experience running an internal sweet market stall where they learn to take orders, handle money, manage stock, make orders and interact with customers.

Learning Difficulties and Disabilities

Extra support is provided by the Additional Learning Support (ALS) team:

- 1 to 1 support
- Shared in class support
- 1 to 1 out of class support
- Dyslexia support
- Mobility support
- Specialist ICT equipment
- Maths workshops
- Personal care
- Special exam arrangements
- Specialist software
- Adapted equipment
- English workshops



Please declare your learning disability or difficulty at the interview so that the appropriate support can be planned. If you would like a change in the support you are receiving you can talk to the College's Additional Learning Support (ALS) Manager to discuss your needs.

Pathways 2: Skills for Work (Work experience/Tesco)

Students continue to learn how to look after themselves with minimal support, identify work skills and experience a supported work placement at Tesco. By the end of the course, students have greater independence in the community, leisure activities and daily life. This pathway is ideal for anyone wanting to be more independent with their lives.



CANCER
RESEARCH
UK



dmu.ac.uk
DE MONTFORT
UNIVERSITY
LEICESTER

Pathways 3: Supported Internships (Finding employment)

What are Supported Internships?

These are programmes of study that help you to get a job. What makes them different is that you do most of your learning at work and some in college. This means you can learn on the job. We will work closely with the employer and your internship tutor to ensure that the placement is in an appropriate area of interest linked to a job/career aspiration you might have. This is a 1 year course.

How will this help me?

You will:

- Build a CV
- Access work experience to be in a better position to apply for an apprenticeship or job
- Receive training
- Learn job specific skills

Can I do this course?

You must:

- Want to work
- Be 16-24 years of age
- Have a statement of Special Needs and/or Educational Health and a Care Plan
- Be able to travel independently or with some support
- Manage behaviour and emotions in the workplace

Job Coach Support

Job Coach Support can be provided for those students requiring it, to settle in, learn work routines and become independent in their job roles.

We are working with a range of employers who are offering Hospitality, Business Administration, Retail, Gardening, Sports, and Health and Social Care placements.



ASDAN
Registered Centre



Better Futures
Multi-Academy Trust

Coventry
University 



**Colin Grundy Drive
Hamilton
Leicester
LE5 1GA
0116 274 4500
admin@gateway.ac.uk
www.gateway.ac.uk**